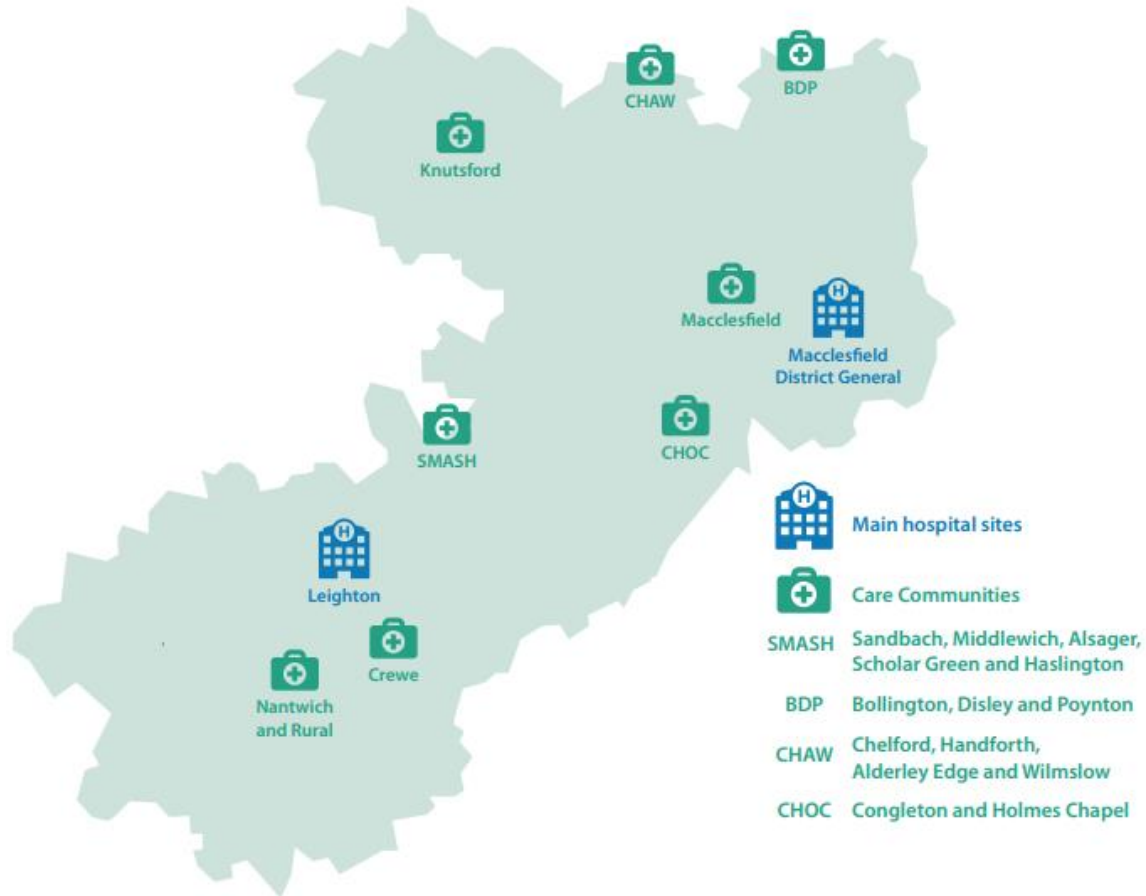


# Cheshire East Partnership

Acute Hospital Services Redesign: Developing a New Model of Care

# Cheshire East Place



The core Cheshire East Place Partnership is made up of the following organisations working together:

- Cheshire East Council
- Cheshire and Wirral Partnership NHS Foundation Trust
- East Cheshire NHS Trust
- NHS Cheshire Clinical Commissioning Group
- Mid Cheshire Hospitals NHS Foundation Trust
- South Cheshire and Vale Royal GP Alliance
- Vernova Healthcare CIC
- Healthwatch

# What are we trying to achieve?



Ensuring our acute hospital services respond to our plans to provide integrated care across Cheshire East Place



Ensuring our acute hospital services are designed to deliver the best possible outcomes for the population of Cheshire East



Ensuring our acute hospital services are future proofed to deal with changing demand and population health needs



Ensuring patients are provided care in the most appropriate setting and closer to home where possible, by working collaboratively with our integrated care partners

# Context of Acute Hospital Services Redesign





# What is a Model of Care?

A Model of Care provides a future vision of health and care services that are to be provided to a population. It broadly defines the way health services are delivered and builds upon clinical standards and best practice. A Model of Care is developed in response to a Case for Change and enables you to describe how services will be improved to address the issues identified.

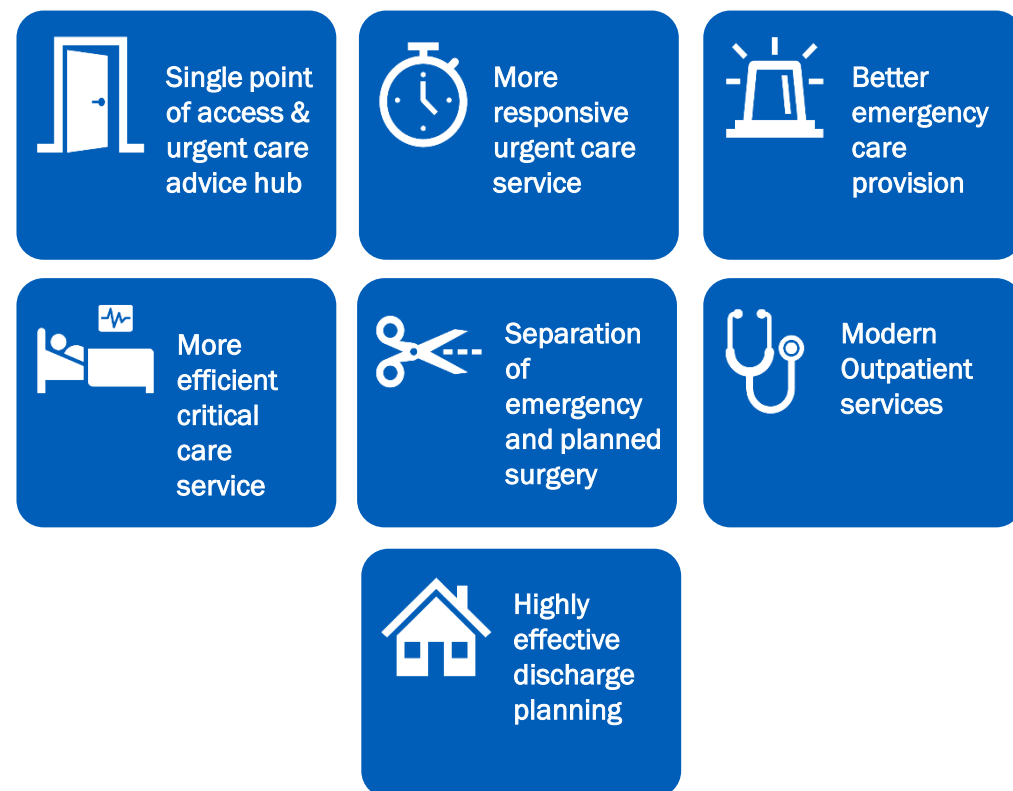
A Model of Care may also be described as a clinical model or care model.

Designing a Model of Care is a key step in preparing a service change proposal and is a component of many business cases including pre-consultation business cases and capital business cases. Design of a Model of Care is led by health and care professionals and precedes the development of options for delivering service change.



# What is a Model of Care?

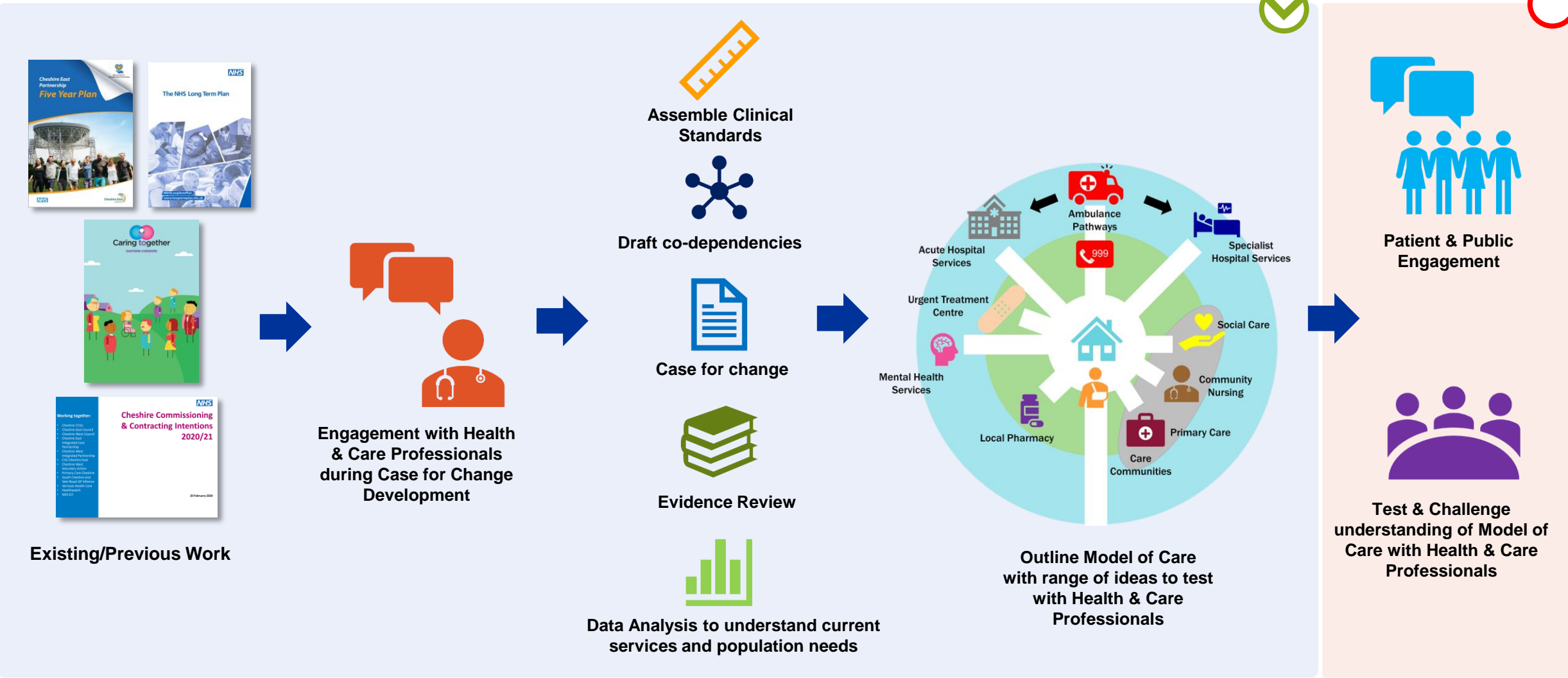
Example: Principles underpinning Model of Care for Acute & Urgent Care Services



An acute Model of Care describes how services provided by hospitals (e.g. urgent and emergency care, planned care) should look in the future. As well as describing how hospital services should be delivered differently in future, it may also need to describe how, other services provided within the local community should look in the future to help support the vision for hospital-based care.

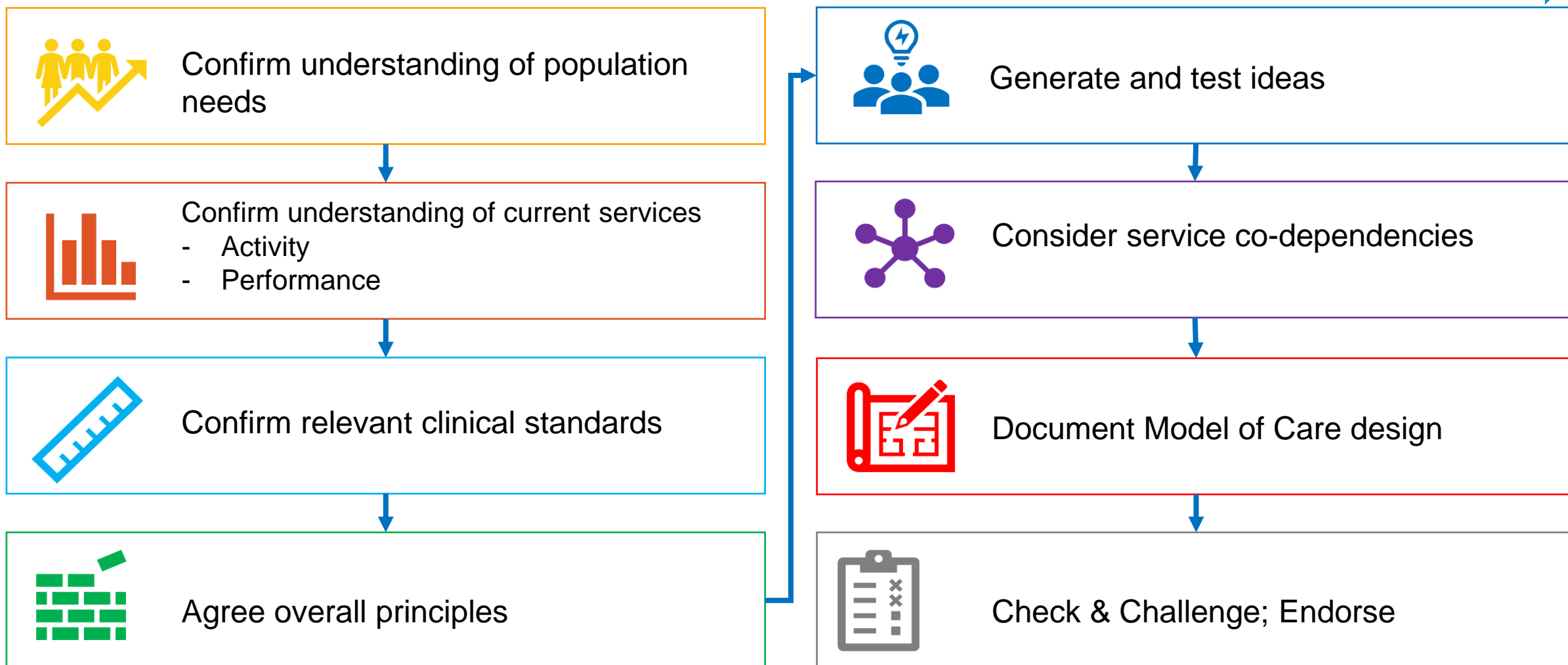
A Model of Care outlines 'what' should change to help address the issues outlined in the case for change. ***It does not describe the future location of services or which organisation should provide them.***

# Progress to date



# Model of Care Workshops: Focus

## Patient & Public Engagement





# Next Steps



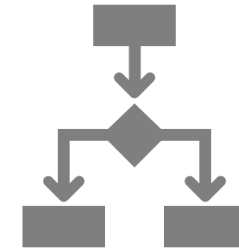
Model of Care



Health & Care  
Professional  
Assurance



Endorsement  
via  
Governance  
Groups



Develop  
options for  
delivering  
Model of Care



Continued Patient & Public Engagement